

314E L CR

Hydraulic Excavator



Engine

| | | |
|-----------------------|------------------|-------|
| Engine Model | Cat® C4.4 ACERT™ | |
| Net Power – SAE J1349 | 67 kW | 89 hp |

Drive

| | | |
|----------------------|----------|------------|
| Maximum Travel Speed | 5.4 km/h | 3.4 mph |
| Maximum Drawbar Pull | 113 kN | 25,400 lbf |

Weight

| | | |
|--------------------|-----------|-----------|
| Operating Weight | | |
| Long Undercarriage | 15 000 kg | 33,070 lb |

If you are looking for a compact, productive, and fuel-efficient 14 metric ton machine, you will find it in the all new 314E L CR. Built to meet U.S. Environmental Protection Agency (EPA) Tier 4 Interim emission standards, European Union Stage IIIB emission standards, and Japan MLIT Step 4 emission standards, the 314E L CR makes an excellent choice for people who need a well-balanced and versatile utility machine. In fact, this new model comes equipped with several new features and benefits that will please both you and your operators.

Contents

Compact Radius4

Engine5

Hydraulics6

Operator Station.....8

Structures & Undercarriage9

Work Tools.....10

Front Linkage11

Serviceability12

Safety13

Complete Customer Care.....14

Sustainability15

Specifications.....16

Standard Equipment.....23





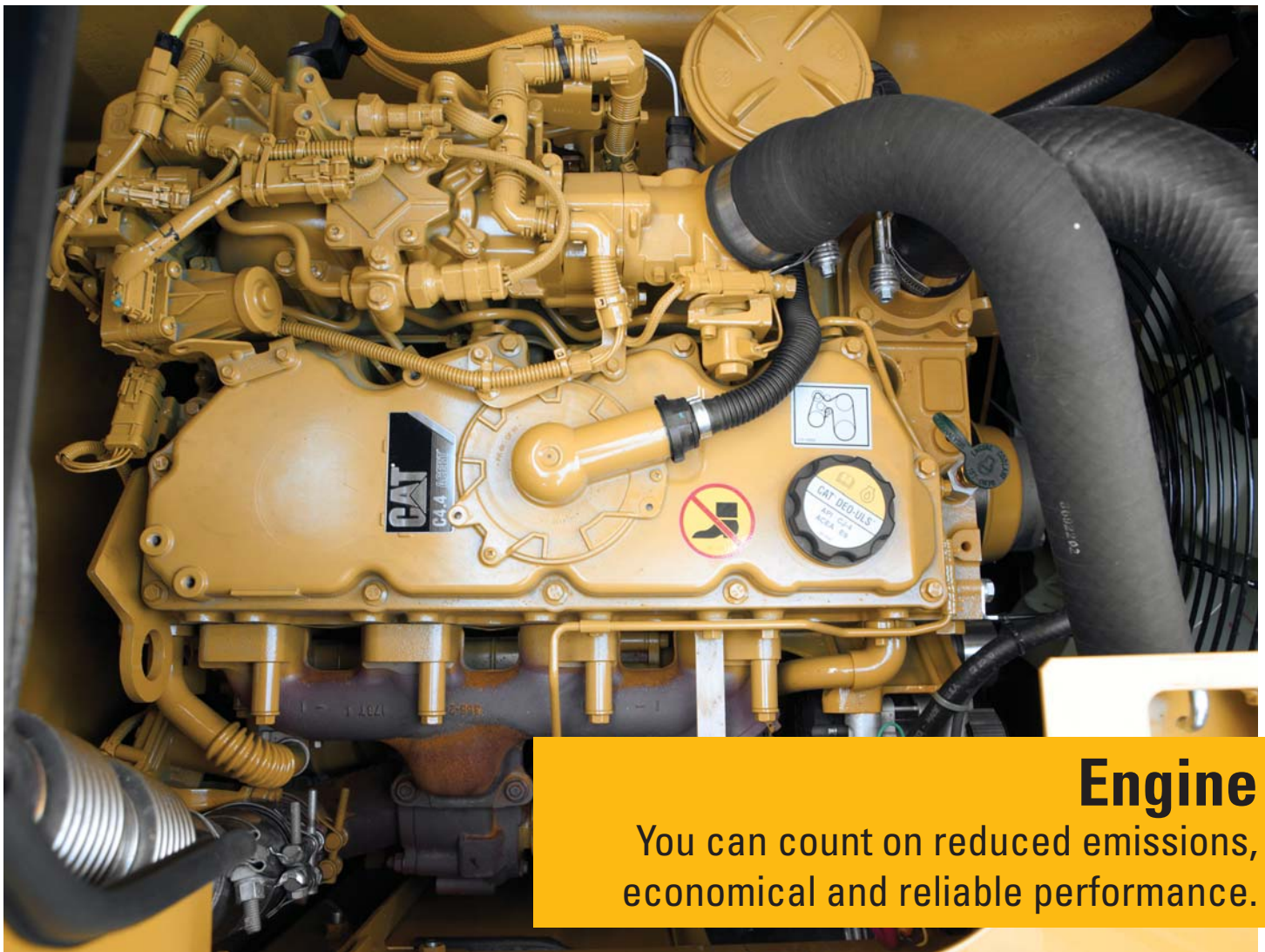
Compact Radius

You can have flexibility and peace of mind in tight quarters.



If your work space is restricted, the 314E L CR makes an ideal choice because it can get up close to new residential construction, buildings, fences, hillsides, or any other “crowded” environment with ease.

During the entire 360 swing the counterweight will never protrude beyond the length of the undercarriage. This significantly reduces the risk of your operator damaging the machine and surrounding structures in full swing, which makes for a safer work environment and lower owning and operating costs for your business.



Engine

You can count on reduced emissions,
economical and reliable performance.

The Cat C4.4 ACERT engine is built to meet your demanding needs all day every day. There is no interruption to your job process as our new regeneration system works automatically with no operator intervention required.

Power Modes

The 314E L CR features two power modes: High power mode is when you need maximum production; economy mode is when you need to balance performance with fuel economy.

Two additional fuel-saving features are on demand engine power and engine idle shutdown. On demand engine power keeps speed low during light loading and idling and automatically adjusts speed up when it senses a heavier load; engine idle shutdown automatically shuts the engine off when it's been idling for more than a specified amount of time that you set, which can save you significant amounts of fuel, reduce your emissions, and even reduce your accumulated service hours, which will extend service intervals and improve re-sale value.

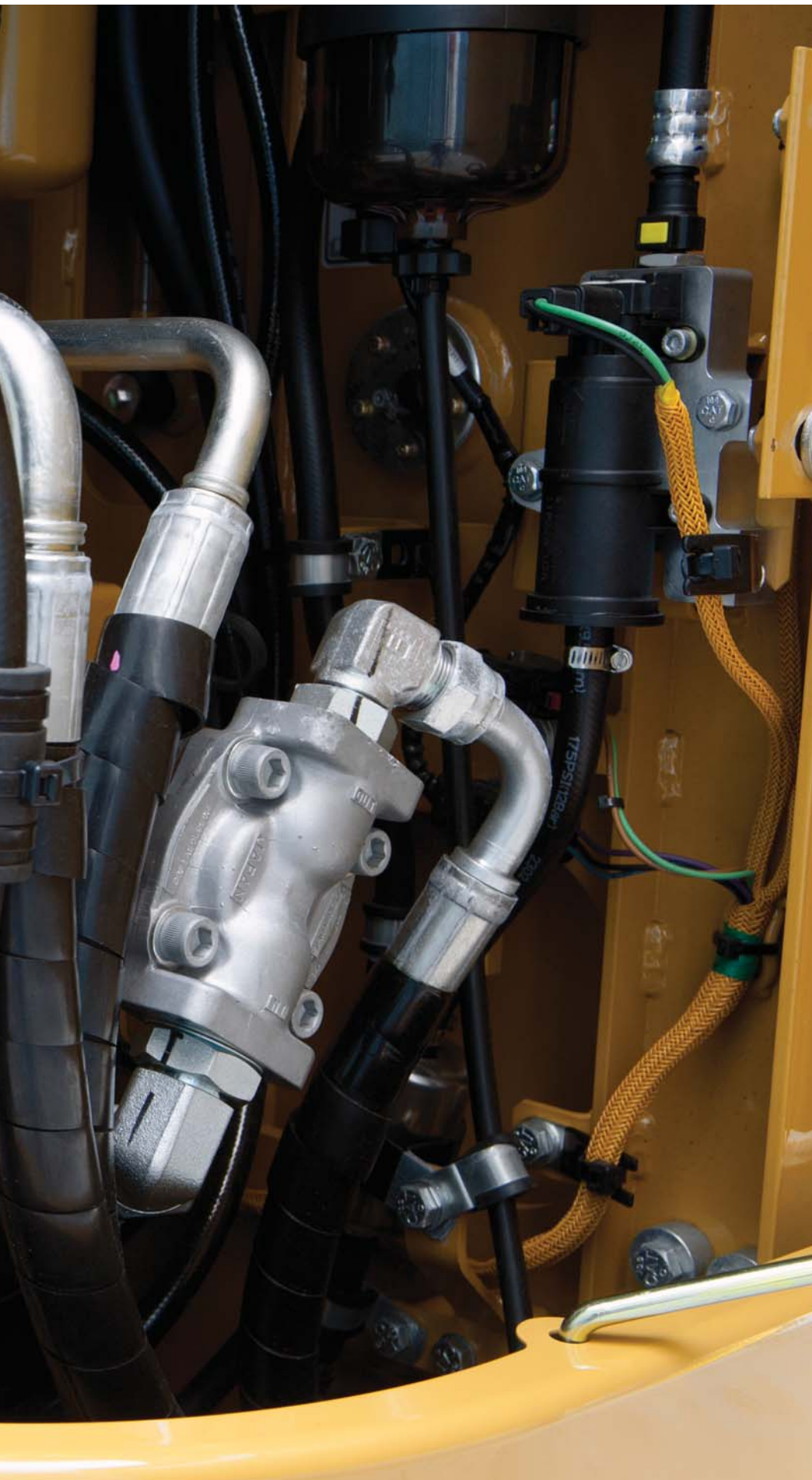
Biodiesel-Ready Fuel System

The C4.4 ACERT engine runs on ultra-low-sulfur diesel fuel, and you have added flexibility of running on B20 biodiesel fuel that meets ASTM 6751 standards. Just fill it up and go.

Hydraulics

You can move dirt, rock, and debris with speed, precision, and efficiency.





Hydraulic System

One of the biggest contributors to your productivity and fuel savings is a well-designed hydraulic system, and this is where Cat excavators stand apart. The 314E L CR is loaded with several unique features that will put more power to the ground with less money out of your pocket.

Pumps and Valves

The main control valve is built to work with any tool, allowing you to take on multiple tasks with one machine. The main pumps are located side by side and are driven directly by the engine for the highest level of efficiency to reduce your fuel costs.

Boom Regeneration

Electric boom regeneration results in less pressure loss, higher controllability, more productivity, and lower operating costs for you; it works by reusing the flow of oil that travels from the head of the boom cylinder to the rod end of the boom cylinder during your operator's everyday "boom down" operation. During boom regeneration, engine speed is controlled to be low in order to save extra oil flow from going to the boom cylinders, which saves energy.

Operator Station

Your operators will enjoy the incredibly quiet and comfortable cab.



Seats

The high back with head rest, mechanical suspension seat gives operators all the comfort they need for a long day of work. The seat includes a reclining back, upper and lower seat slide adjustments, and height and tilt angle adjustments.

Controls

Your operators can adjust the right and left joysticks for individual preferences, helping the operator become more comfortable, more productive, and more alert.

Power Supply and Auxiliary Audio Port

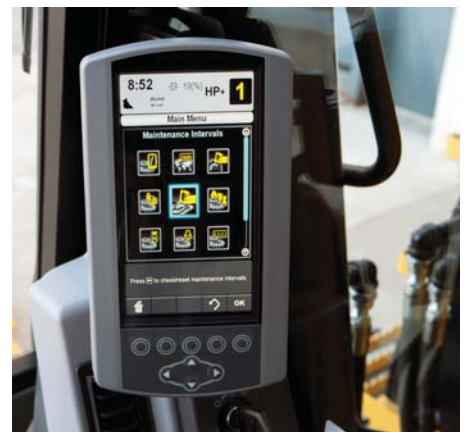
To keep your operators happy, comfortable and connected, one 12-volt power supply is located on the radio near key storage areas for charging electronic devices such as an MP3 player and cell phone. An auxiliary port allows your operators to plug and play MP3 audio through the cab's speakers.

Storage

Your operators have storage spaces located in the rear. A dedicated space near the auxiliary power supply will hold an MP3 player and cell phone. The drink holder accommodates large mugs with handles, and a shelf behind the seat stores large lunch or toolboxes.

Monitor

Your operators can keep safely focused on the job at hand with a high-resolution LCD monitor that is programmable in 42 languages to support today's diverse workforce. It also projects the image from an available rearview camera, further enhancing the safety and productivity of your job site.



Automatic Climate Control

An automatic climate control system features seven air outlets with filtered ventilation to make your operators comfortable in either hot or cold climates.

Structures & Undercarriage

You can take on a variety of tough tasks with this built-to-last machine.



Frame

You can expect excellent quality, reliability, and durability with the 314E L CR's reinforced lower and upper frames. Both are built to handle a hard day's work over and over again. The upper frame includes reinforced mountings to support the Roll-Over Protective Structure (ROPS) cab; the lower frame is reinforced to increase component durability.

Undercarriage

Long undercarriage supports any type of work you can do with a 14 metric ton machine. The track rollers are a double solid-pin-type design to improve reliability; the bottom guard helps maintain track alignment and improves the machine's overall performance.

Counterweight

A 3.56 mt (3.9 t) heavy counterweight for long undercarriage matches your machine to the task at hand, whether it's doing light trenching or heavy lifting. With integrated links, you can also easily – and safely – remove the counterweight for maintenance or shipping.



Work Tools

You can dig, hammer, rip, and cut with confidence.



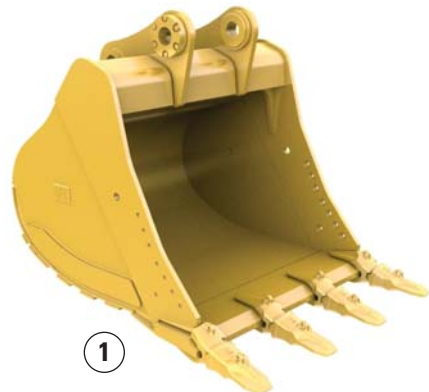
You can extend the versatility and performance of your machine with the full lineup of Cat work tools. Each tool equips your machine to perform many different tasks found at a variety of job sites.

Bucket: Dig, Move, Load

Cat buckets are designed to fill efficiently so you notice a fast, smooth cycle which means high productivity each time you dig. GD buckets are for digging in low-impact, low-abrasion material such as dirt, loam, and mixed compositions of dirt and fine gravel.

Work Tools: Cut, Crush, Pulverize, and Load

No matter your specialty, Caterpillar provides tools that are perfectly matched to get the most out of your Cat machine – quickly and efficiently.



1) General Duty (GD)



Front Linkage

You'll experience a long service life even in the harshest of conditions.

Your uptime and service intervals are increased with durable and reliable booms, sticks, and linkage pins. Each boom and stick is built with internal baffle plates for additional strength, and each undergoes ultrasound inspection to ensure you get the durability and reliability you expect for any tough application.

Booms

The 4.65 m (15'3") reach boom offers you excellent all-around versatility and a large working envelope. A unique bucket-to-cab avoidance feature is also included to ensure safe operation.

Sticks

The R2.8 m (9'2") stick provides greater breakout force and increases productivity when you primarily plan on using hydro-mechanical work tools.

Serviceability

You can depend on safe, fast, and easy access.



Ground-Level Compartments

Your service technicians have ground-level access to the radiator, pump, and air cleaner compartments through wide service doors, making it easy for them to reach, check, and replace fluids and filters.

Cooling System

The cooling package features an improved oil cooler and engine radiator design mounted side by side and the air-to-air aftercooler and A/C condenser mounted in front. The radiator uses an aluminum square wave fin to prevent clogging with the other components positioned to make cleaning cores easier – a major service convenience.

Other Service Benefits

The engine oil dipstick is conveniently located in the front of the engine compartment.

The fuel tank's remote drain cock makes it easy and simple to remove water and sediment during routine maintenance.

Overfilling the fuel tank is significantly reduced with an integrated fuel level indicator.



Safety

Several built-in features will help protect your people.

Roll-Over Protective Structure (ROPS) Cab

Your operators will benefit from the protection of a ROPS-certified cab. It is also built to accommodate a Falling Object Guard Structure (FOGS) for industrial applications.

Sound Proofing

Roof lining and sealing make your operator's sound experience inside the cab comparable to any of today's top pickup trucks.

Anti-Skid Plates

Your operator and service technicians' slipping hazards are reduced with anti-skid plates on the surface of the upper structure and the top of the storage box area.

Steps, Hand and Guard Rails

Your service technicians can work securely on the machine with extended hand and guardrails to the upper deck and steps on the track frame and storage box.

Time Delay Lights

The cab and boom lights can be programmed to stay on for up to 90 seconds after the engine has been turned off to help your operators safely exit the machine.

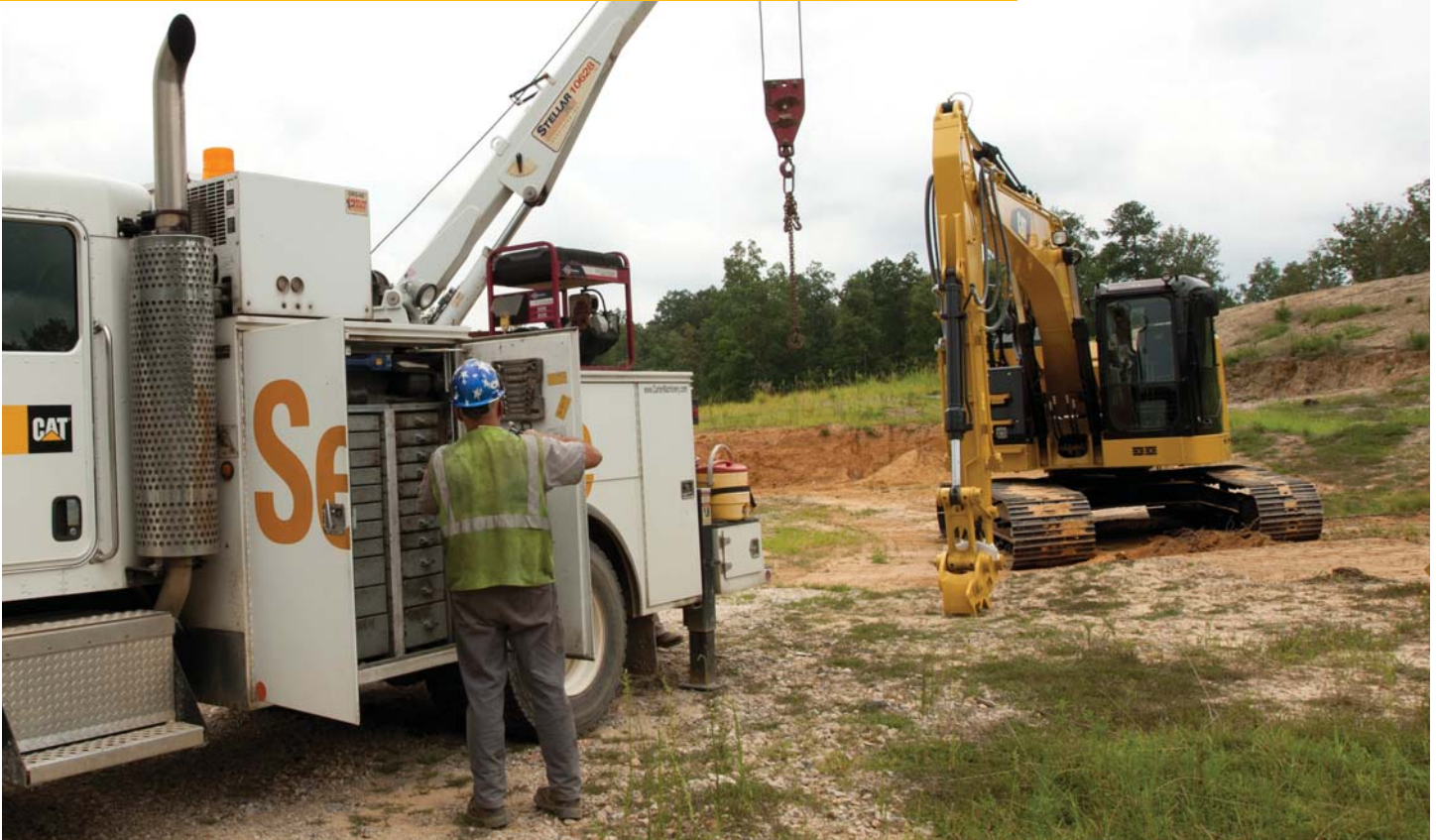
Windows

You can easily store both the upper and lower window in cab. You also have great overhead visibility and lighting with a large skylight.



Complete Customer Care

Your Cat dealer will support you like no other.



Product Support

You can maximize your machines' uptime with the Cat worldwide dealer network. You can also decrease your repair costs by utilizing Cat remanufactured components while contributing to sustainable development.

Machine Selection

What are your job requirements and machine attachments? What production do you need? Your Cat dealer can provide recommendations to help you make the right machine configuration.

Purchase

You can ensure lower owning and operating costs by utilizing dealer services and financing options.

Customer Support Agreements

Cat dealers offer a variety of customer support agreements and work with you to develop a plan to meet your specific needs. These plans can cover the entire machine, including attachments, to help protect your investment.

Operation

You can boost your profits by improving operating techniques. Your Cat dealer has videos, literature, and other ideas to help you increase productivity. Caterpillar also offers simulators and certified operator training to help maximize the return on your investment.

Replacement

Repair, rebuild, or replace? Your Cat dealer can help you evaluate the cost involved so you can make the best choice for your business.

Sustainability

Your machine is designed to conserve natural resources for generations ahead.



- The 314E L CR is an efficient, productive machine that's designed to conserve our natural resources for generations ahead.
- The C4.4 ACERT engine meets U.S. EPA Tier 4 Interim emission standards, European Union Stage IIIB emission standards, and Japan MLIT Step 4 emission standards.
- The 314E L CR has the flexibility of running on either ultra-low-sulfur diesel (ULSD) fuel with 15 ppm of sulfur or less or biodiesel (B20) fuel blended with ULSD that meets ASTM 6751 standards.
- An overfill indicator rises when the fuel tank is full to help your service technicians avoid spilling.
- An unique engine oil filter eliminates the need for painted metal cans and aluminum top plates. The cartridge-style spin-on housing enables the internal filter to be separated and replaced; the used internal element can be incinerated to help reduce waste.

314E L CR Hydraulic Excavator Specifications

Engine

| | | |
|-------------------------|----------------|---------------------|
| Engine Model | Cat C4.4 ACERT | |
| Gross Power – SAE J1995 | 71 kW | 95 hp |
| Net Power – SAE J1349 | 67 kW | 89 hp |
| Bore | 105 mm | 4.1 in |
| Stroke | 127 mm | 5.0 in |
| Displacement | 4.4 L | 270 in ³ |

Weight

| | | |
|--------------------|-----------|-----------|
| Operating Weight | | |
| Long Undercarriage | 15 000 kg | 33,070 lb |

Hydraulic System

| | | |
|---------------------------------|---------------|----------------|
| Main System – Maximum Flow | 2 × 127 L/min | 2 × 34 gal/min |
| Maximum Pressure – Equipment | 30 500 kPa | 4,420 psi |
| Maximum Pressure – Travel | 35 000 kPa | 5,080 psi |
| Maximum Pressure – Swing | 23 000 kPa | 3,340 psi |
| Pilot System – Maximum Flow | 21.9 L/min | 4.8 gal/min |
| Pilot System – Maximum Pressure | 4120 kPa | 600 psi |
| Boom Cylinder – Bore | 110 mm | 4.3 in |
| Boom Cylinder – Stroke | 1000 mm | 39.4 in |
| Stick Cylinder – Bore | 120 mm | 4.7 in |
| Stick Cylinder – Stroke | 1197 mm | 47.1 in |
| Bucket Cylinder – Bore | 100 mm | 3.9 in |
| Bucket Cylinder – Stroke | 939 mm | 37.0 in |

Drive

| | | |
|----------------------|----------|------------|
| Maximum Travel Speed | 5.4 km/h | 3.4 mph |
| Maximum Drawbar Pull | 113 kN | 25,400 lbf |

Swing Mechanism

| | | |
|--------------|-----------|---------------|
| Swing Speed | 11.5 rpm | |
| Swing Torque | 30.9 kN·m | 22,790 lbf·ft |

Service Refill Capacities

| | | |
|-----------------------------------|--------|----------|
| Fuel Tank Capacity | 178 L | 47.0 gal |
| Cooling System | 28 L | 7.40 gal |
| Engine Oil (with filter) | 13.5 L | 3.6 gal |
| Swing Drive (each) | 2.4 L | 0.6 gal |
| Final Drive (each) | 3 L | 0.8 gal |
| Hydraulic System (including tank) | 160 L | 42.3 gal |
| Hydraulic Tank | 84 L | 22.2 gal |

Track

| | |
|---------------------------------------|-----------|
| Long Undercarriage | |
| Number of Shoes (each side) | 46 pieces |
| Number of Track Rollers (each side) | 7 pieces |
| Number of Carrier Rollers (each side) | 2 pieces |
| Length to Center of Rollers | 3040 mm |
| Track Length | 3750 mm |

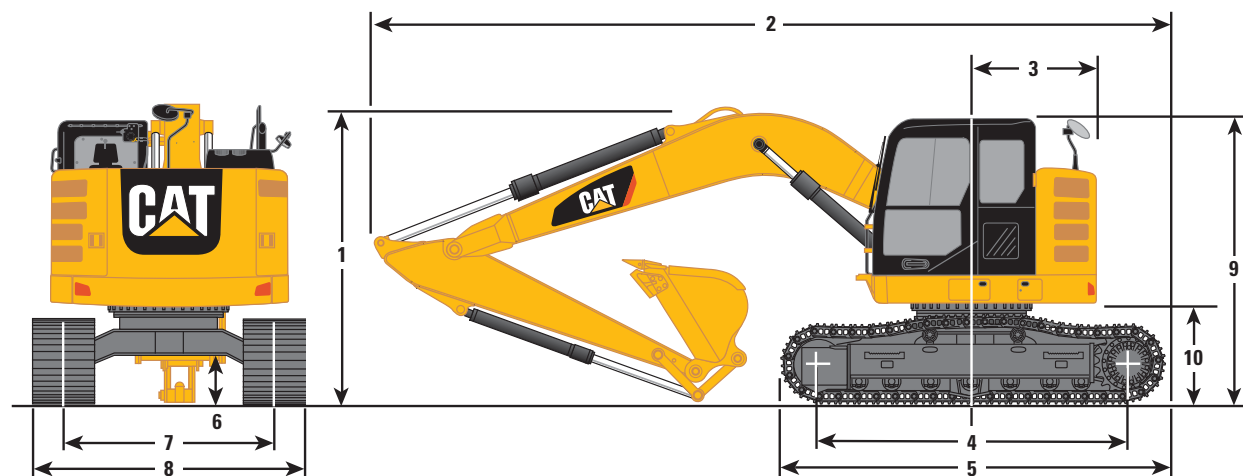
Sound Performance

| | |
|-------------------------|-----------|
| ISO 6396 | |
| Operator Noise (Closed) | 69 dB(A) |
| ISO 6395 | |
| Spectator Noise | 100 dB(A) |

314E L CR Hydraulic Excavator Specifications

Dimensions

All dimensions are approximate.



Boom Type

Reach Boom
4.65 m (15'3")

Stick Size

R2.8 m
(9'2")

| | | |
|--------------------------------------|---------|-------|
| 1 Shipping Height* | 3030 mm | 9'11" |
| Shipping Height at Boom Top | 3030 mm | 9'11" |
| Shipping Height with Guard Rail | 3000 mm | 9'10" |
| 2 Shipping Length | | |
| Long Undercarriage | 7440 mm | 24'5" |
| 3 Tail Swing Radius | | |
| Heavy Counterweight | 1530 mm | 5'0" |
| 4 Length to Center of Rollers | | |
| Long Undercarriage | 3040 mm | 10'0" |
| 5 Track Length | | |
| Long Undercarriage | 3750 mm | 12'4" |
| 6 Ground Clearance | 440 mm | 1'5" |
| 7 Track Gauge | 1990 mm | 6'6" |
| 8 Transport Width | | |
| 500 mm (20") Shoes | 2490 mm | 8'2" |
| 9 Cab Height | 2810 mm | 9'3" |
| Cab Height with Top Guard | 2950 mm | 9'8" |
| 10 Counterweight Clearance** | 860 mm | 2'10" |

Bucket (STD)

| | | |
|------------|---------------------|----------------------|
| Type | General Duty (GD) | |
| Capacity | 0.53 m ³ | 0.69 yd ³ |
| Tip Radius | 1200 mm | 3'11" |

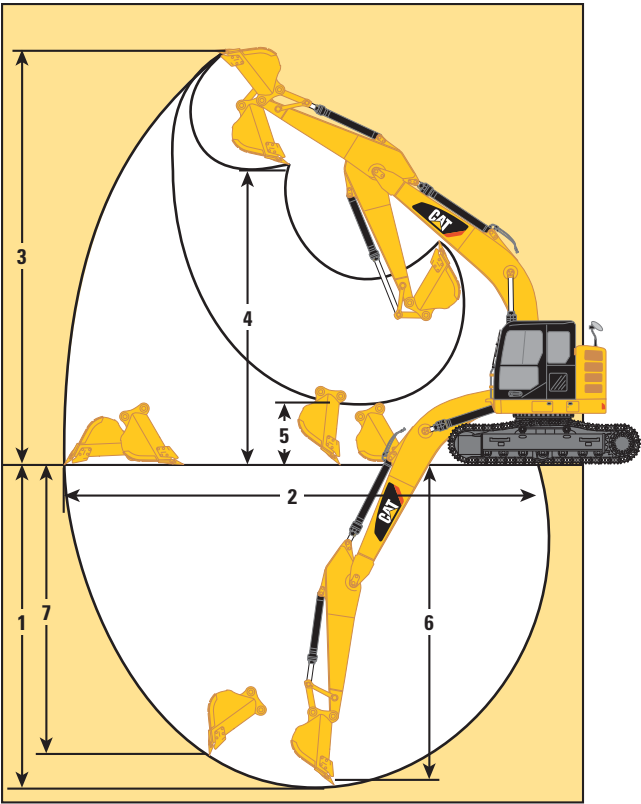
*Including shoe lug height.

**Without shoe lug height.

314E L CR Hydraulic Excavator Specifications

Working Ranges

All dimensions are approximate.



| Boom Type | | Reach Boom 4.65 m (15'3") | |
|--------------|---|------------------------------|----------------------|
| Stick Size | | R2.8 m (9'2") | |
| 1 | Maximum Digging Depth | 5750 mm | 18'10" |
| 2 | Maximum Reach at Ground Level | 8490 mm | 27'10" |
| 3 | Maximum Cutting Height | 9480 mm | 31'1" |
| 4 | Maximum Loading Height | 7030 mm | 23'1" |
| 5 | Minimum Loading Height | 2240 mm | 7'4" |
| 6 | Maximum Depth Cut for 2440 mm (8'0") Level Bottom | 5460 mm | 17'11" |
| 7 | Maximum Vertical Wall Digging Depth | 5090 mm | 16'8" |
| Bucket (STD) | | | |
| Type | | General Duty (GD) | |
| Capacity | | 0.53 m ³ | 0.69 yd ³ |
| Tip Radius | | 1200 mm | 3'11" |

314E L CR Hydraulic Excavator Specifications

Major Component Weights

| | | |
|---|---------|-----------|
| Base Machine (with boom cylinder, without counterweight, front linkage and track) | 5040 kg | 11,110 lb |
| Undercarriage | | |
| Long Undercarriage | 2660 kg | 5,870 lb |
| Counterweight | | |
| Heavy – 3.56 mt (3.9 t) | 3560 kg | 7,850 lb |
| Boom (includes lines, pins and stick cylinder) | | |
| Reach Boom – 4.65 m (15'3") | 1040 kg | 2,290 lb |
| Stick (includes lines, pins, bucket cylinder and bucket linkage) | | |
| R2.8 m (9'2") | 620 kg | 1,370 lb |
| Track Shoe | | |
| Long/per two tracks | | |
| 500 mm (20") Triple Grouser | 1570 kg | 3,460 lb |
| Bucket | | |
| GD – 0.53 m ³ (0.69 yd ³) with side-cutter and tip | 460 kg | 1,010 lb |
| Operator | 75 kg | 170 lb |

All weights are rounded up to nearest 10 kg and lb except for buckets. Kg and lb were rounded up separately so some of the kg and lb do not match.

Base machine includes 75 kg (170 lb) operator weight, fuel weight, and undercarriage with center guard.

Operating Weight and Ground Pressure

| | 500 mm (20") Triple Grouser Shoes | | | |
|---|--------------------------------------|--------|------|------|
| | kg | lb | kPa | psi |
| Long Undercarriage without Blade, with Heavy Counterweight | | | | |
| Reach Boom – 4.65 m (15'3") | | | | |
| R2.8 m (9'2") | 15 000 | 33,300 | 44.7 | 6.48 |

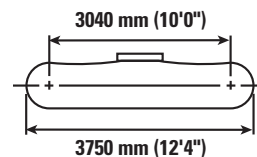
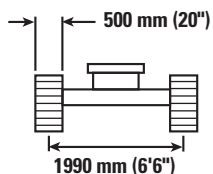
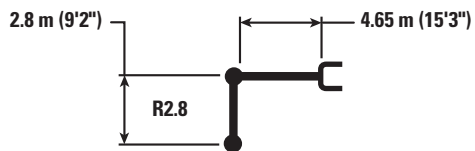
Bucket and Stick Forces

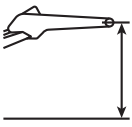


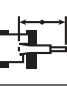



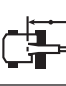

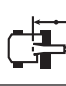

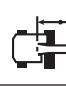
| Boom Type | Reach Boom 4.65 m (15'3") | |
|----------------------------|------------------------------|------------|
| Stick Size | R2.8 m (9'2") | |
| General Duty | | |
| Bucket Digging Force (ISO) | 95 kN | 21,400 lbf |
| Stick Digging Force (ISO) | 61 kN | 13,800 lbf |
| Bucket Digging Force (SAE) | 85 kN | 19,200 lbf |
| Stick Digging Force (SAE) | 60 kN | 13,500 lbf |

Caterpillar recommends using appropriate work tools to maximize the value customers receive from our products. Use of work tools, including buckets, which are outside of Caterpillar's recommendations or specifications for weight, dimensions, flows, pressures, etc. may result in less-than-optimal performance, including but not limited to reductions in production, stability, reliability, and component durability. Improper use of a work tool resulting in sweeping, prying, twisting and/or catching of heavy loads will reduce the life of the boom and stick.

314E L CR Hydraulic Excavator Specifications

Reach Boom Lift Capacities – Long Undercarriage – Counterweight: 3.56 mt (3.9 t)



|  | | 1500 mm/60 in | | 3000 mm/120 in | | 4500 mm/180 in | | 6000 mm/240 in | |  | | mm in |
|---|----------|---|---|---|---|---|---|--|---|---|---|-------------|
| | |  |  |  |  |  |  |  |  |  |  | |
| 7500 mm 300 in | kg lb | | | | | | | | | *2750 *6,250 | *2750 *6,250 | 4210 160 |
| 6000 mm 240 in | kg lb | | | | | *3650 *7,950 | *3650 *7,950 | | | *2300 *5,100 | *2300 *5,100 | 5840 230 |
| 4500 mm 180 in | kg lb | | | | | *3850 *8,400 | *3850 *8,400 | *3500 *7,650 | 2550 5,500 | *2150 *4,750 | 2100 4,650 | 6750 270 |
| 3000 mm 120 in | kg lb | | | *6300 *13,450 | *6300 *13,450 | *4550 *9,800 | 3850 8,250 | *3750 *8,100 | 2500 5,350 | *2150 *4,750 | 1850 4,050 | 7240 290 |
| 1500 mm 60 in | kg lb | | | *8300 *17,900 | 6400 13,800 | *5300 *11,400 | 3550 7,700 | 3800 8,150 | 2400 5,100 | *2250 *4,950 | 1750 3,800 | 7400 300 |
| 0 mm 0 in | kg lb | | | *7050 *16,300 | 6050 13,000 | *5650 12,150 | 3400 7,250 | 3700 7,900 | 2300 4,900 | *2500 *5,500 | 1750 3,850 | 7240 290 |
| -1500 mm -60 in | kg lb | *4750 *10,600 | *4750 *10,600 | *7900 *17,100 | 6000 12,800 | *5400 *11,650 | 3300 7,050 | 3650 7,800 | 2250 4,800 | *3000 *6,600 | 1950 4,250 | 6740 270 |
| -3000 mm -120 in | kg lb | *8100 *18,150 | *8100 *18,150 | *6200 *13,300 | 6050 13,000 | *4350 *9,300 | 3300 7,100 | | | *2900 *6,350 | 2400 5,250 | 5810 230 |
| -4500 mm | kg | | | | | | | | | *2550 | *2550 | 3670 |



ISO 10567



*Indicates that the load is limited by hydraulic lifting capacity rather than tipping load. The above loads are in compliance with hydraulic excavator lift capacity standard ISO 10567:2007. They do not exceed 87% of hydraulic lifting capacity or 75% of tipping load. Weight of all lifting accessories must be deducted from the above lifting capacities. Lifting capacities are based on the machine standing on a firm, uniform supporting surface. The use of a work tool attachment point to handle/lift objects, could affect the machine lift performance.

Lift capacity stays with $\pm 5\%$ for all available track shoes.

Always refer to the appropriate Operation and Maintenance Manual for specific product information.

314E L CR Hydraulic Excavator Specifications

Work Tool Offering Guide*

| Boom Type | Reach Boom |
|-----------------------------------|------------------|
| Stick Size | R2.8 m (9'2") |
| Hydraulic Hammer | H110Es H115Es |
| Demolition and Sorting Grapple | G310B** |
| Mobile Scrap and Demolition Shear | S320B# |
| Compactor (Vibratory Plate) | CVP75 |
| Contractors' Grapple | G112B |
| Orange Peel Grapple | |
| Trash Grapple | |
| Thumbs | |
| Rakes | |
| Center-Lock Pin Grabber Coupler | |
| Dedicated Quick Coupler | |

These work tools are available for the 314E L CR.
Consult your Cat dealer for proper match.

* Offerings not available in all areas. Matches are dependent on excavator configurations. Consult your Cat dealer to determine what is offered in your area and for proper work tool match.

** Pin-on only

Boom Mount

314E L CR Hydraulic Excavator Specifications

Bucket Specifications and Compatibility

| | Width | | Capacity | | Weight | | Fill | Reach Boom |
|--|-------|----|----------------|-----------------|--------|-------|------|---------------|
| | mm | in | m ³ | yd ³ | kg | lb | % | R2.8 m (9'2") |
| Without Quick Coupler | | | | | | | | |
| General Duty (GD) | 450 | 18 | 0.20 | 0.27 | 276 | 608 | 100% | ● |
| | 600 | 24 | 0.31 | 0.40 | 326 | 719 | 100% | ● |
| | 900 | 36 | 0.53 | 0.69 | 423 | 932 | 100% | ● |
| | 1050 | 42 | 0.65 | 0.84 | 476 | 1,049 | 100% | ⊙ |
| | 1200 | 48 | 0.76 | 1.00 | 510 | 1,125 | 100% | X |
| Severe Duty (SD) | 600 | 24 | 0.31 | 0.40 | 367 | 810 | 90% | ● |
| | 900 | 36 | 0.53 | 0.69 | 466 | 1,027 | 90% | ● |
| | 1050 | 42 | 0.65 | 0.84 | 529 | 1,166 | 90% | ● |
| | 1050 | 42 | 0.65 | 0.84 | 542 | 1,195 | 90% | ● |
| Maximum load pin on (payload + bucket) | | | | | | | kg | 1815 |
| | | | | | | | lb | 4,000 |

| | Width | | Capacity | | Weight | | Fill | Reach Boom |
|--|-------|----|----------------|-----------------|--------|-------|------|---------------|
| | mm | in | m ³ | yd ³ | kg | lb | % | R2.8 m (9'2") |
| With Center-Lock Quick Coupler | | | | | | | | |
| General Duty (GD) | 450 | 18 | 0.20 | 0.27 | 276 | 608 | 100% | ● |
| | 600 | 24 | 0.31 | 0.40 | 326 | 719 | 100% | ● |
| | 900 | 36 | 0.53 | 0.69 | 423 | 932 | 100% | ● |
| | 1050 | 42 | 0.65 | 0.84 | 476 | 1,049 | 100% | ⊖ |
| | 1200 | 48 | 0.76 | 1.00 | 510 | 1,125 | 100% | ○ |
| Severe Duty (SD) | 600 | 24 | 0.31 | 0.40 | 367 | 810 | 90% | ● |
| | 900 | 36 | 0.53 | 0.69 | 466 | 1,027 | 90% | ● |
| | 1050 | 42 | 0.65 | 0.84 | 529 | 1,166 | 90% | ⊖ |
| | 1050 | 42 | 0.65 | 0.84 | 542 | 1,195 | 90% | ⊖ |
| Maximum load with coupler (payload + bucket) | | | | | | | kg | 1569 |
| | | | | | | | lb | 3,459 |

The above loads are in compliance with hydraulic excavator standard EN474, they do not exceed 87% of hydraulic lifting capacity or 75% of tipping capacity with front linkage fully extended at ground line with bucket curled.

Capacity based on ISO 7451.

Bucket weight with Long tips.

Maximum Material Density:

- 2100 kg/m³ (3,500 lb/yd³)
- ⊙ 1800 kg/m³ (3,000 lb/yd³)
- ⊖ 1500 kg/m³ (2,500 lb/yd³)
- 1200 kg/m³ (2,000 lb/yd³)
- X Not recommended

Caterpillar recommends using appropriate work tools to maximize the value customers receive from our products. Use of work tools, including buckets, which are outside of Caterpillar's recommendations or specifications for weight, dimensions, flows, pressures, etc. may result in less-than-optimal performance, including but not limited to reductions in production, stability, reliability, and component durability. Improper use of a work tool resulting in sweeping, prying, twisting and/or catching of heavy loads will reduce the life of the boom and stick.

Standard Equipment

Standard equipment may vary. Consult your Cat dealer for details.

CAB

- Seat, high back mechanical suspension
- Pressurized operator station with positive filtration
- Sliding upper door window (left-hand cab door)
- Removable lower windshield with in cab storage bracket
- Coat hook
- Beverage holder
- Literature holder
- Two stereo speakers
- Storage shelf suitable for lunch or toolbox
- Color LCD display with indicators, filter/fluid change, and working hour information
- Adjustable armrest
- Height adjustable joystick consoles
- Neutral lever (lock out) for all controls
- Travel control pedals with removable hand levers
- Capability of installing additional pedal
- Power outlets, 5 amp
- Travel alarm
- Laminated glass front upper window and tempered other windows
- Cab mirror
- Seatbelt, 51 mm (2")

FRONT LINKAGE

- 4.65 m (15'3") Reach Boom
– 2.8 m (9'2") Reach Stick
- Bucket linkage, lifting eye

COUNTERWEIGHT

- Heavy counterweight 3.56 mt (3.9 t) without lifting eye

ELECTRICAL

- 80 amp alternator
- Circuit breaker
- Capability to electrically connect a beacon

ENGINE

- C4.4 ACERT diesel engine
- Biodiesel capable
- Meets U.S. Environmental Protection Agency (EPA) Tier 4 Interim emission standards, European Union Stage IIIB emission standards, and Japan MLIT Step 4 emission standards
- 2300 m (7,500 ft) altitude capability
- Electric priming pump
- Automatic engine speed control
- Economy and high power modes
- Two-speed travel
- Side-by-side cooling system
- Radial seal air filter
- Primary filter with water separator and water separator indicator
- Secondary filter
- Screen filter in fuel line
- Variable speed fan with viscous clutch
- Standard battery –18° C (0° F)

HYDRAULIC SYSTEM

- Auxiliary hydraulics
- Boom and stick lines
- High-pressure line
- Regeneration circuit for boom and stick
- Reverse swing dampening valve
- Automatic swing parking brake
- High-performance hydraulic return filter
- Capability of installing HP stackable valve and medium and QC valve
- Capability of installing additional auxiliary pump and circuit
- Control pattern quick-changer, four way

LIGHTS

- Halogen boom light (left side)
- Time delay function for boom light and cab light
- Exterior light
- Working light, cab mounted with time delay

UNDERCARRIAGE

- 500 mm (20") triple grouser shoes
- Center track guiding guard for long undercarriage
- Grease Lubricated Track GLT2, resin seal
- Towing eye on base frame
- Swivel guard

SECURITY

- Cat one key security system
- Door locks
- Cap locks on fuel and hydraulic tanks
- Lockable external tool/storage box
- Signaling/warning horn
- Secondary engine shutoff switch
- Rear window for emergency exit
- Guard, travel motor protection
- Guard rail
- Bottom guards

For more complete information on Cat products, dealer services,
and industry solutions, visit us on the web at **www.cat.com**

© 2014 Caterpillar
All rights reserved

Materials and specifications are subject to change without notice.
Featured machines in photos may include additional equipment.
See your Cat dealer for available options.

CAT, CATERPILLAR, SAFETY.CAT.COM, their respective logos,
“Caterpillar Yellow” and the “Power Edge” trade dress, as well
as corporate and product identity used herein, are trademarks
of Caterpillar and may not be used without permission.

AEHQ7208 (01-2014)
(Singapore)

