



GRU DA CITTÀ SENZA CUSPIDE - TOP LESS CITY CRANE
CITY CRANE SANS POINÇON - CITY KRAN OHNE TURMSPITZE

MRT156



RAIMONDI



Scheda Tecnica
Technical Data Sheet
Spécific Techniques
Technische Spezifikationen

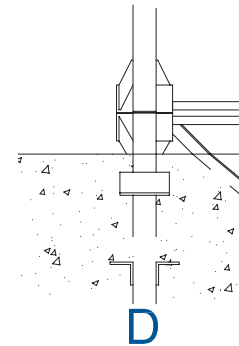
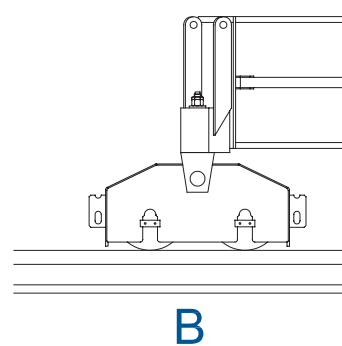
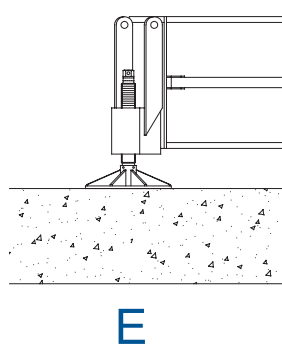
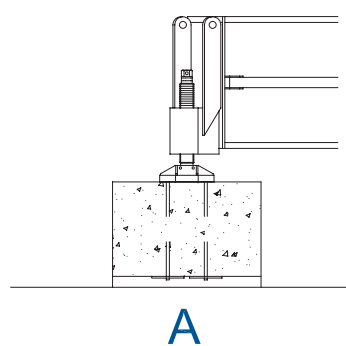
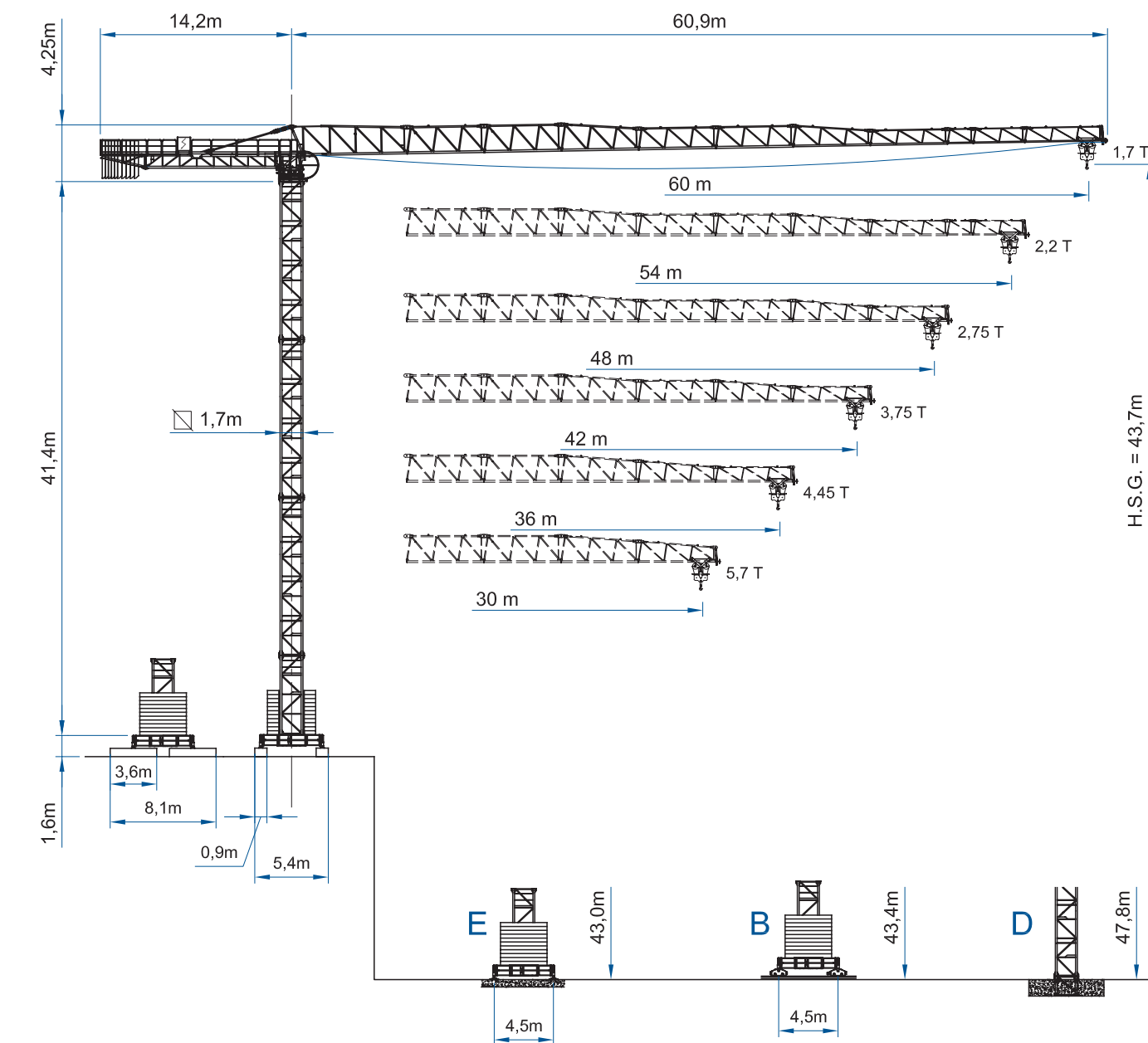
MRT156

GRU DA CITTÀ SENZA CUSPIDE - TOP LESS CITY CRANE
CITY CRANE SANS POINCON - CITY KRAN OHNE TURMSPITZE

RAIMONDI

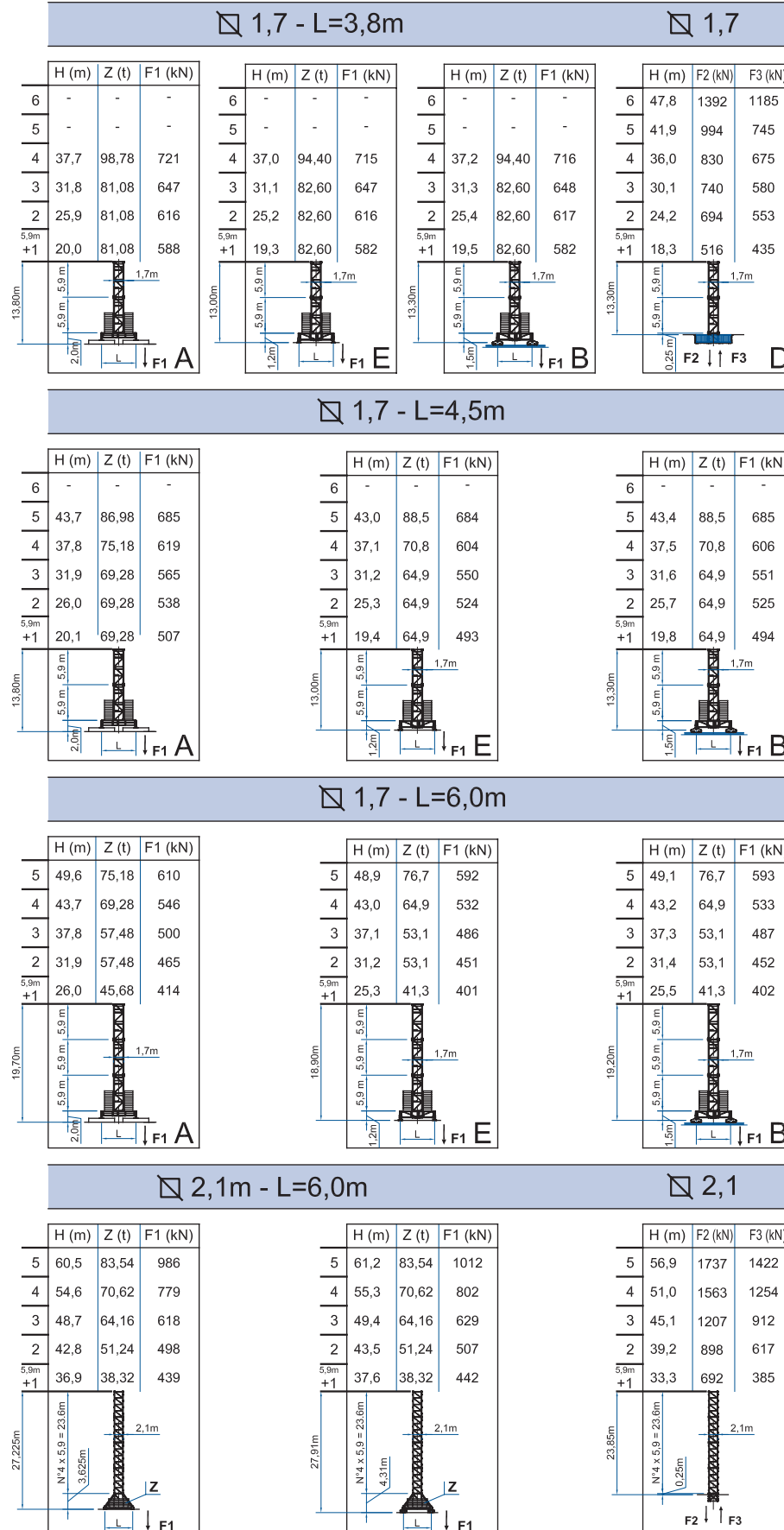


A3 FEM1,001







ALTEZZA SOTTOGANCIO

Height under hook / Hauteur sous crochet / Hakenhöhe



PORTATA


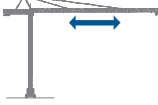

Load - Charge - Tragfähigkeit

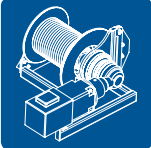


Portata max / Max s.w.l. Charge maxi / Max. Tragfähigkeit		 6000 kg. / 3000 kg. 						 8000 kg. / 4000 kg. 					
Sbraccio / Radius Ausladung / Portée	m.	30	36	42	48	54	60	30	36	42	48	54	60
Campo di portata max da Max s.w.l. range from Charge maxi de Max. Tragfähigkeit von	1,7 m a to à bis	28,6	27,7	26,7	24,8	23,5	21,6	22,3	21,7	21,0	19,6	18,6	17,2
Sbraccio (m.) Radius (m.) Portée (m.) Ausladung (m.)	12	6000	6000	6000	6000	6000	6000	8000	8000	8000	8000	8000	8000
	14	6000	6000	6000	6000	6000	6000	8000	8000	8000	8000	8000	8000
	16	6000	6000	6000	6000	6000	6000	8000	8000	8000	8000	8000	8000
	18	6000	6000	6000	6000	6000	6000	8000	8000	8000	8000	8000	7638
	20	6000	6000	6000	6000	6000	6000	8000	8000	8000	7833	7393	6763
	22	6000	6000	6000	6000	6000	5876	8000	7878	7595	7023	6625	6054
	24	6000	6000	6000	6000	5861	5314	7367	7134	6875	6353	5989	5468
	26	6000	6000	6000	5703	5345	4841	6723	6509	6270	5789	5455	4975
	28	6000	5946	5704	5236	4905	4438	6174	5975	5755	5309	4999	4555
	30	5700	5495	5269	4834	4525	4091	5700	5515	5310	4895	4607	4193
	32		5102	4891	4483	4194	3788		5115	4922	4534	4264	3877
	33		4924	4719	4324	4044	3651		4933	4747	4371	4109	3734
	34		4756	4558	4175	3903	3522		4762	4581	4217	3963	3600
	36		4450	4263	3902	3646	3286		4450	4280	3936	3696	3354
	38			3999	3658	3416	3075			4010	3685	3459	3134
	40			3763	3439	3209	2886			3768	3460	3245	2937
	42			3550	3242	3023	2716			3550	3256	3052	2759
	44				3063	2854	2561				3072	2877	2598
	46				2899	2700	2420				2904	2718	2451
48				2750	2559	2291				2750	2572	2316	
50					2430	2172					2438	2193	
52					2310	2063					2314	2079	
54					2200	1962					2200	1973	
56						1868						1876	
58						1781						1785	
60						1700						1700	

Solo tiro semplice: +100 Kg. / Two reeving only: +100 Kg. / Mouflage à deux brins seulement: +100 Kg. / Nur zwei-stränge: +100 Kg.
Con sistema "ULTRALIFT" tutte le portate intermedie sono aumentate del 10% - All intermediate loads are increased of 10% if the crane is equipped with "ULTRALIFT" control - Les charges intermédiaires sont augmentées de 10% si la grue est équipée avec contrôle "ULTRALIFT"

CARATTERISTICHE AZIONAMENTI PRINCIPALI

General Technical Characteristics - Caracteristiques des mecanismes de distribution - Allgemeine Technische Daten

		Velocità - Speed Vitesse - Geschwindigkeit	Potenza - Power Puissance - Leistung
Rotazione - Slewing Orientation - Schwenken		0,26 / 0,48 / 0,7 mm ⁻¹	2 x 4 Kw
Carrello - Trolley Chariot - Katzfahren		18,8 / 35,2 / 54 m/min Progressivo - Progressive	5,5 Kw
Traslazione - Rail Translation - Kranfahren		20 m/min	2 x 4 Kw

Tipo Type Type Type		Potenza-power puissance - Leistung		Fune rope cable Seil	Marcia Step Vitesse Gang				
		CV - ch - PS - hp	kW			m	Carico load charge last	Velocità speed Geschw vitesse	Carico load charge last
						kg	m/min	kg	m/min
25 HP - 6		25	18,4	190	1	3000	7,5	6000	3,7
					2	3000	30	6000	15
					3	1500	60	3000	30
25 HP - 6 VF		25	18,4	190	1	3000	6	6000	3
					2	3000	30	6000	15
					3	1500	60	3000	30
					4	1000	72	2000	36
33 HP - 8 VF		33	24,3	193	1	4000	5,6	8000	2,8
					2	4000	28	8000	14
					3	2000	56	4000	28
					4	1300	67	2600	33,6
50 HP - 8 VF		50	36,8	300	1	4000	9	8000	5
					2	4000	28	8000	23
					3	2509	75	4689	38
					4	2509	75	4689	38
					5	1907	98	3516	49
50 HP - 8 HVF		50	36,8	796	1	4000	5	8000	2,5
					2	4000	23	8000	11,5
					3	4000	43	8000	21,5
					4	2748	64	5496	32
					5	1940	87	3880	43,5

Conforme alla direttiva 2000/14/CE sul livello acustico - In compliance with the 2000/14/CE instruction on noise level - Conforme directive 2000/14/CE sur le niveau acoustique - Gemiss 2000/14/CE ber Schall - Leistungspegel - Conforme con la directive 2000/14/CE sobre el nivel acustico

Forza motrice totale Total installed power Puissance totale des moteurs Gesamt-motorenleistung	18,4 Kw (25HP)	24,3 Kw (33HP)	37 Kw (50HP)
	40 Kw	46 Kw	59 Kw

PESI E INGOMBRI

Packing list - Liste de colisage - Kolli-Liste

Pos. Item	Pezzi Pieces	Denominazione Description	Schizzo Sketch	Dimensioni Dimensions			Peso Weight (Kg)		
				L	W	H	Unit.	Total.	
1	1	Elemento di freccia Jib element Élément de flèche Ausleger	N°1		8,985	1,385	2,290	2235	-
	1		N°2		6,157	1,300	2,100	1036	-
	1		N°3		6,098	1,300	2,100	958	-
	1		N°4		6,103	1,300	2,090	838	-
	1		N°5		6,098	1,300	1,660	744	-
	1		N°6		6,070	1,300	1,680	669	-
	1		N°7		6,060	1,300	1,660	566	-
	1		N°8		6,050	1,300	1,210	516	-
	1		N°9		2,175	1,300	1,170	161	-
	1		N°10		4,020	1,300	1,160	242	-
	1		N°11		1,000	1,300	1,130	87	-
2	1	Puntale freccia Jib point Élément pointe Spitzelement		1,315	1,290	1,525	110	-	
3	1	Controfreccia,organo di sollev., quadro elettrico,carrello freccia etc. Counterjib, hoisting winch, trolley jib, electrical box etc. Contreflèche tournante, treuil de levage, chariot de flèche, armoire électrique etc. Gegenausleger, Hubwinde, Laufkatze Schaltschrank etc.		13,330 (L1) 11,950	2,010 1,960	2,215 2,300	8100 5700	- -	
	1	Controfreccia,organo di sollev., quadro elettrico,carrello freccia,portablocchi. Counterjib, hoisting winch, trolley jib, electrical box, element for counterweight. Contreflèche,treuil de levage, chariot de flèche, armoire électrique, élément terminal. Gegenausleger, Hubwinde, Laufkatze Schaltschrank Gegenwichtelement.		16,600	2,010	2,215	8800	-	
4	1	Girevole, quadro elettrico, porta-cabina cabina etc. Turntable, electrical box, service and access balcony, cabin etc. Plateforme tournante, cabine, armoire elect. Drehwerk, Schaltschrank, Kabinenpedest, Kabine.		2,470	3,830	2,190	4620	-	
5	2	Blocchi di contrappeso Counterweight block Contre-poids Gegengewichtsbloecke		A123	1,475	0,400	3,070	3615	7230
	C123			1,475	0,290	3,070	2625	5250	
	D123			1,475	0,190	3,070	1720	5160	

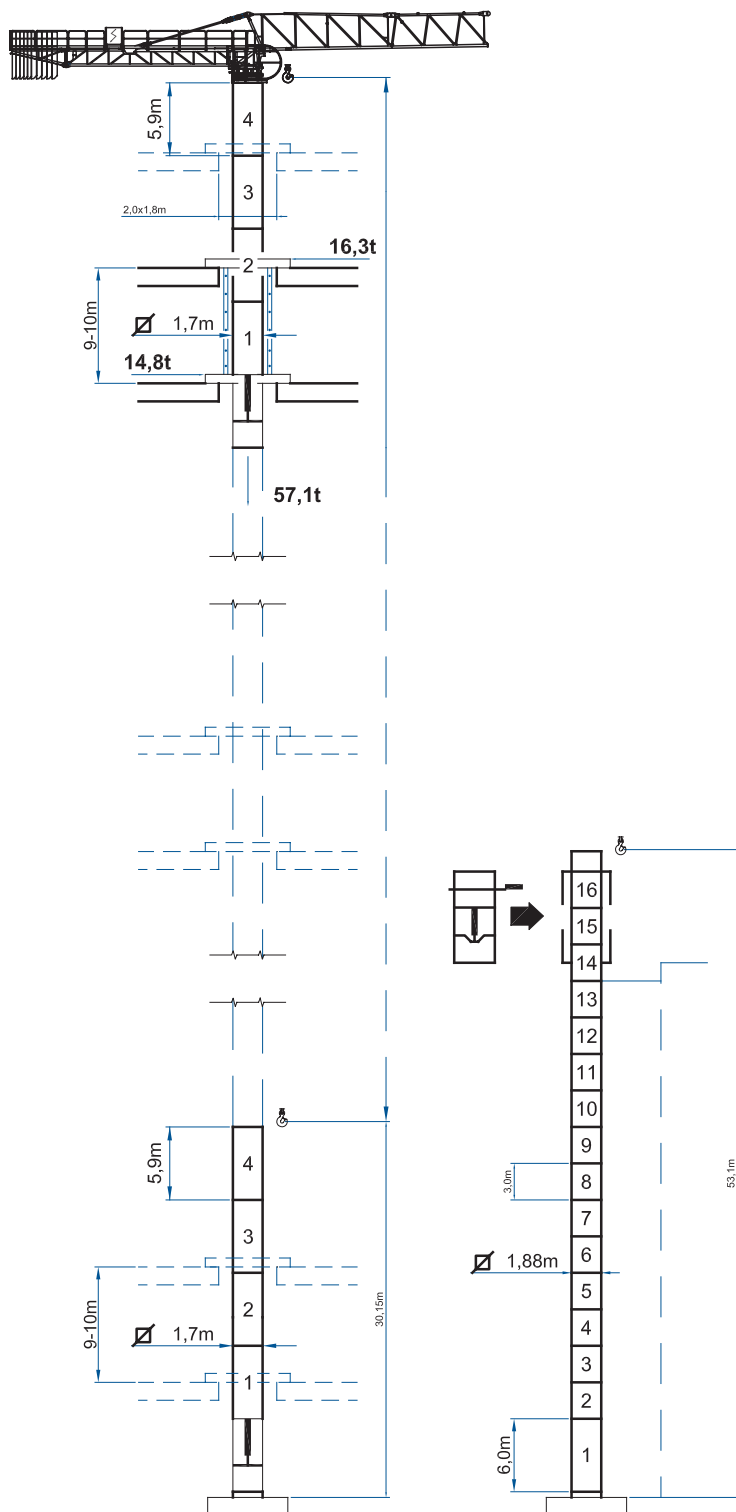
PESI E INGOMBRI

Packing list - Liste de colisage - Kolli-Liste

Pos. Item	Pezzi Pieces	Denominazione Description	Schizzo Sketch	Dimensioni Dimensions			Peso Weight (Kg)	
				L	W	H	Unit.	Total.
6	-			2,950	1,900	1,700	1335	-
7	-	Elemento di torre Tower element Élément de mature Turmstück		5,900	1,900	1,700	2267	-
8	-			11,800	1,900	1,700	4135	-
9	1	Tronchetto di fondazione Expendable foundation element Élément a sceller Fundamentanker		1,465	1,980	1,980	830	-
10	1	Trave principale della crociera di base Base main beam Poutre de chassis de base Hauptträger für Kreuzgelenk		6,524	0,780	0,960	2595	-
11	2	Semitrave della crociera di base Half base beam Semipoutre de chassis de base Halbträger für Kreuzgelenk		3,212	0,680	0,974	1235	2470
12	4	Blocco di appoggio Concrete pad Sabot en béton Betonfuss (B5)		3,600	0,900	0,750	5520	22080
13	2	Bilancino di traslazione folle Driven bogie Boggie fou Fahrschemel ohne motorantrieb		1,315	0,222	0,540	600	1200
14	2	Bilancino di traslazione motorizzato Driving bogie Boggie motorisée Fahrschemel mit motorantrieb		1,427	0,492	0,540	765	1530
15	28	Blocco di zavorra Base ballast block Lest de base Grundballastblöcken (GB3)		3,600	1,200	0,300	2900	81200
HC5 - 2,1m								
16	-			2,950	2,270	2,270	1530	-
17	-	Elemento di torre monolitico Tower element Élément de mature Turmstück		5,900	2,270	2,270	2700	-
18	-			11,800	2,270	2,270	5100	-
19	1	Elemento di base Base element Mat de base Turmbasiselement		3,000	2,475	2,475	1925	-
20	1	Gabbia di motaggio Climbing cage Cage de montage Hydraulikbühne		8,530	3,100	2,300	7670	-
21	1	Tronchetto di fondazione Expendable foundation element Élément a sceller Fundamentanker		1,345	2,400	2,400	820	-
22	4	Puntoni di base Oblique legs Jambes de force Basisdruckstäben		3,640	0,220	0,300	288	1152
23	1	Trave principale della crociera di base Base main beam Poutre de chassis de base Hauptträger für Kreuzgelenk		8,890	0,620	0,720	1575	-
24	2	Semitrave della crociera di base Half base beam Semipoutre de chassis de base Halbträger für Kreuzgelenk		4,340	0,600	0,720	700	1400
25	4	Bilancino di traslazione motorizzato Driven bogie Boggie motorisée Fahrschemel mit Motorantrieb		1,427	0,492	0,540	765	1530
26	1	Telaio di raccordo e spinta Climbing cage connection frame Élément de telescopage Turmstück		2,296	2,296	1,500	1190	-

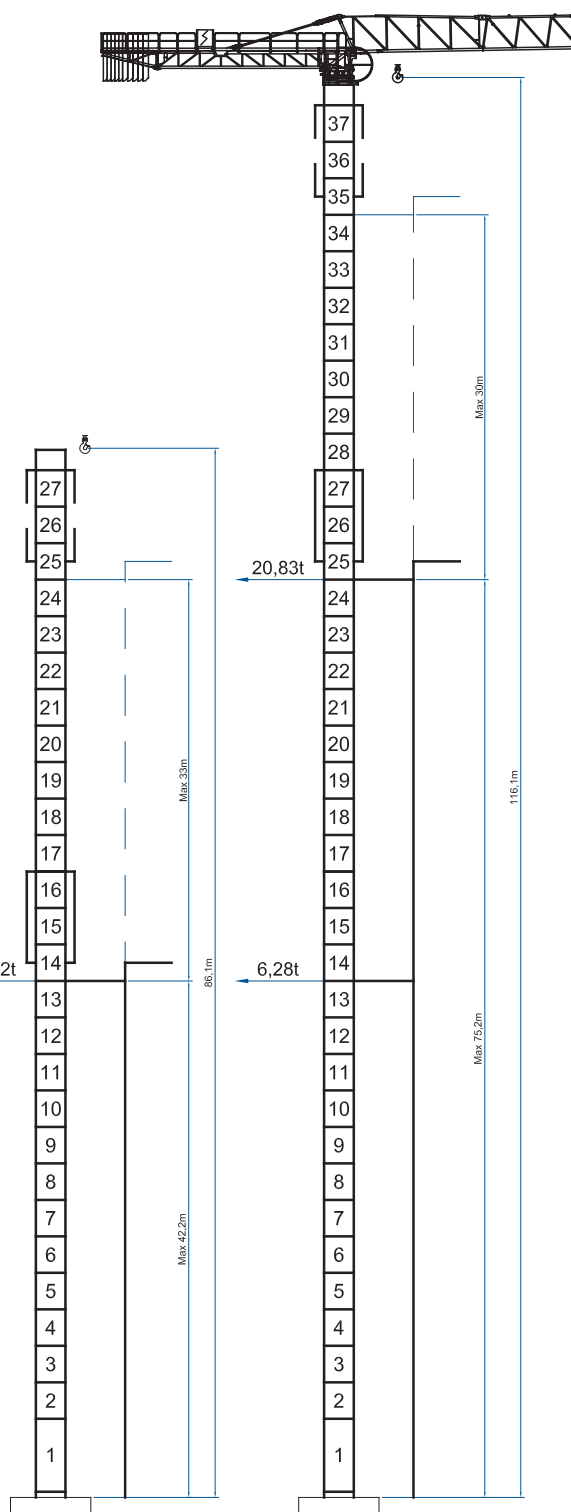
MRT 156 RI

rampante
 floor climbing
 telescopable sur dalles
 kletterkrane im gebaude



MRT 156 HC

a sopralzo idraulico
 external climbing
 telescopable
 kletterkrane



I dati riportati possono essere soggetti a modifiche senza preavviso - METAMORFOSI - MRT156(RI/HC)

CARLO RAIMONDI GRU
 Corso Garibaldi 253
 20025 Legnano Milano ITALY
 Tel. +39 0331 548061
 Fax +39 0331 450400
 www.raimondigr.com



RAIMONDI

Building Tower Cranes since 1946